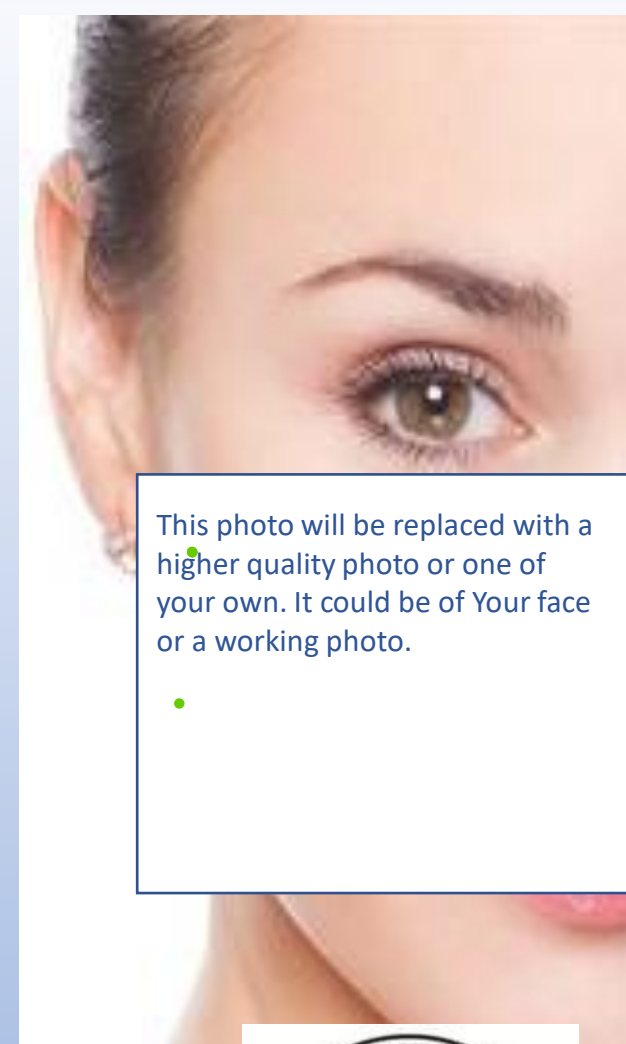


# Your Name Electrology and Skincare Center

Permanent  
Hair Removal

Suzie Smith  
Electrologist



This photo will be replaced with a higher quality photo or one of your own. It could be of Your face or a working photo.



# ELECTROLOGY

The Universal Choice



# Standards of Sterilization and Sanitation



Our office adheres to the recommended national standards for sterilization procedures in Electrology offices established by the American Electrology Association in conjunction with The Centers for Disease Control and Prevention (CDC).



Our office exclusively uses:

- sterile forceps
- pre-sterilized, single- use, disposable probes
- disposable non-latex examination gloves
- ultrasonic cleaner with protein dissolving enzymes
- dry heat sterilizer or autoclave
- fresh table paper / rigid hand washing procedures
- Strict Covid standards adhered to.

## It Takes A Series

One of the most important elements in achieving successful destruction of the hair follicle is the continuity of treatments.

Permanent results are best achieved by faithful participation of each client in a planned program that has been tailored to their individual needs.

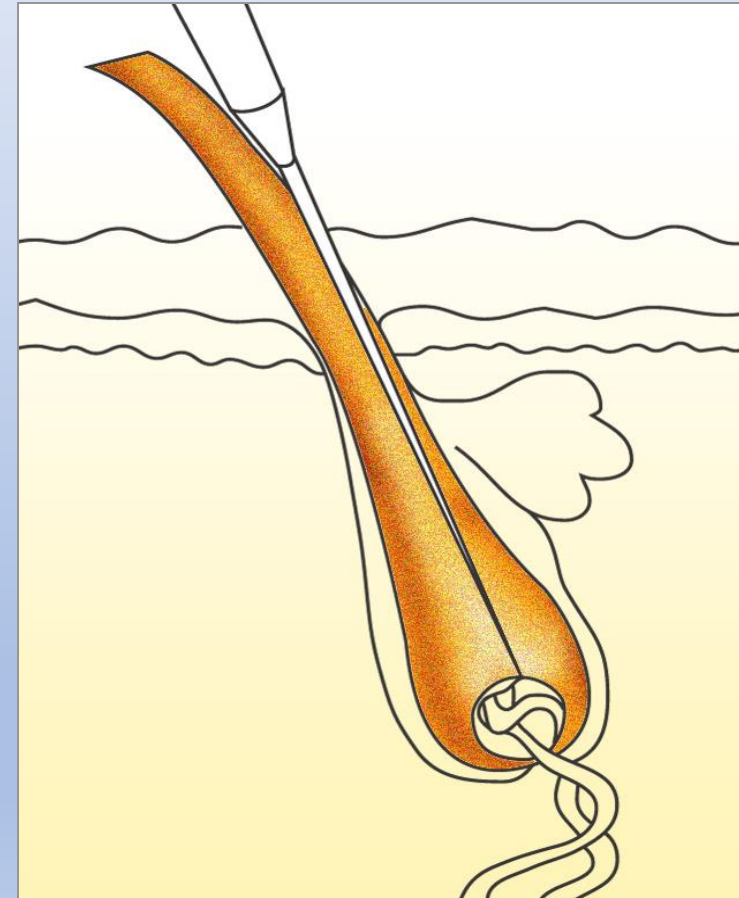
# Continuity of Treatments...

# How It Works - application

A sterile probe is gently inserted into the follicle along side of the hair.

A measured amount of energy is then released via the probe into the follicle to destroy the source of growth.

Because this is a natural opening of the skin, the insertion of the probe into the follicle is not felt by the client. What the client may feel is the application of the current.



# Between Appointments:

- **Do not tweeze or wax the area you are having treated.**
- When a hair is removed in this manner, the follicle can be stimulated to produce a stronger hair. This may also distort the hair follicle, making electrolysis treatments more difficult.
- It takes approximately 10 - 12 weeks for that particular hair to re-grow before it can be treated with electrolysis.

**Hair to be treated may be trimmed with small scissors.**

The hair needs to be approximately 1/8 inch long for treatments.

**Do not use any abrasive scrubbing action on the treated areas.**

**Do not expose treated area to sun or a tanning bed for at least 24 hours before or after treatment** as this could delay the healing process.

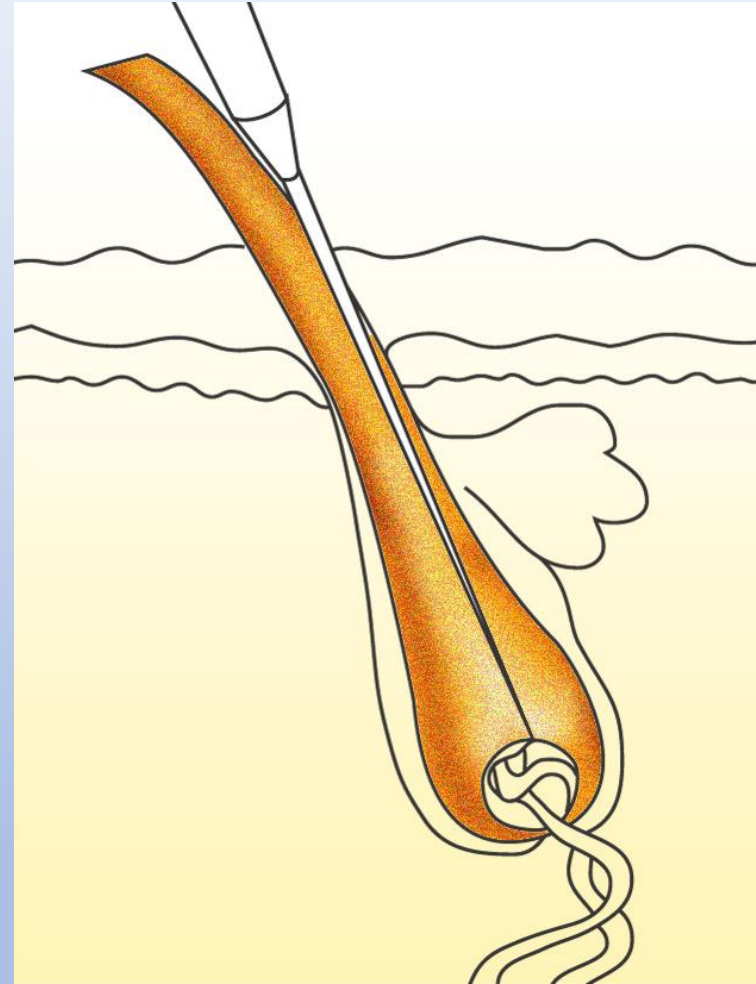
# Does It Damage The Skin?

---

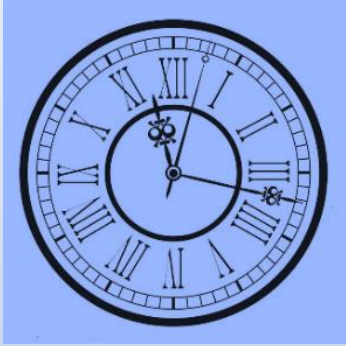
The bulk of the destruction is accomplished in the lower 2/3rds of the follicle, where there is more moisture.

---

The upper 1/3 of the follicle is left untreated, the chance of scarring is eliminated.



# Your Appointment Time



is reserved exclusively FOR YOU.

In fairness to you and to other clients, we ask for a 24/48 hour notice to cancel or change your appointment so we may give that time to another client.

Should you fail to show and/or do not call to cancel or reschedule, you will be expected to pay for the time reserved before your next appointment.

Text or Voice mail is available 24 hours a day.

888-888-8888

This is where we would put your office policies  
For no shows and last minute cancellations.

Your credentials, logos and optional photos that you own will be inserted in the presentation, in addition to the existing photos.

I invite you to provide certain photos to make it your very own presentation. We will discuss this during the consultation which is included in the purchase of the presentation.

This is only a small sample of the 40 slides included.

Using this format will assist you in discussing material needed to educate your clients and to sell your services confidently. It can also be used for public speaking.

If any questions, please contact me via text or phone.

078 424 8584. Regards, June